

# THE CITY OF



# OWATONNA

540 West Hills Circle  
Owatonna, MN 55060-4794  
Ph. (507) 444-4300  
FAX: (507) 444-4394

DATE: July 6, 2021  
TO: Mayor and City Council, City Administrator  
FROM: Jenna Tuma, Parks & Recreation Director  
Jesse Wilker, Maintenance Manager  
SUBJECT: Rose Street Trail Concept Plan

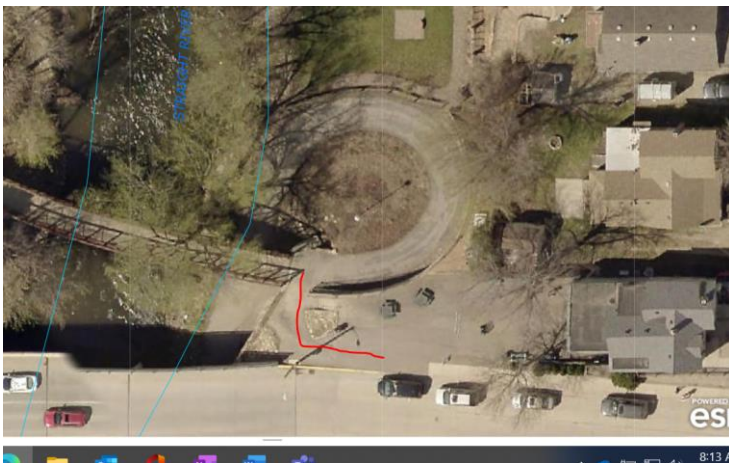
**Purpose:** Accept quote from ISG to develop up to three concept plans for Rose Street Trail redesign.

**Background:**

There was recently a city sewer break on Rose Street which impacted the trail connection to downtown near the Blast. Trail repair, in this immediate area, is needed and there is an opportunity to reconfigure the trail to meet ADA standards, improve safety, and improve the pedestrian flow and bicycle traffic. This trail connection is in a tight footprint with challenging topographic slopes. A concept plan will include project cost estimates for design and construction.

**Budget Impact:** The cost of the concept plan, \$5,700, was not a plan budgeted item since the break was unforeseen. The funds will come from the Park Maintenance operating budget.

**Staff Recommendation:** Staff recommends moving forward with the process to develop up to three concept plans using ISG as the consultant.



JUNE 9, 2021

Jenna Tuma  
Director of Parks and Recreation  
City of Owatonna  
540 West Hills Circle  
Owatonna, MN 55060  
Jenna.Tuma@ci.owatonna.mn.us



RE: PROFESSIONAL SERVICES PROPOSAL FOR ROSE STREET TRAIL IMPROVEMENTS  
OWATONNA, MINNESOTA

Jenna,

Thank you for the opportunity to submit this proposal for professional services for the Rose Street Trail Improvements project. With a local familiarity and a firm understanding of project needs based on the work we have completed to date, ISG is eager to continue its partnership with this project.

## PROJECT UNDERSTANDING

It is our understanding that there is desire to improve accessibility and safety at the Rose Street Trail connection at the bridge crossing Straight River. Currently, the roadway and trail in this location are in disrepair following the recent repair of a blowout therefore creating an opportunity to re-establish the trail differently from originally constructed. The trail provides convenient connectivity to the north end of downtown from the park trails along the river and was originally constructed with a steep, sharp turn transitioning from the ground level at Rose Street to the lower elevation at the pedestrian bridge. At the back of this turn, a fence sits on top of the retaining wall separating the upper trail from the trail below the bridge.

Improvements for this connection that have been discussed are to meet ADA standards, improve safety, and improve circulation for competing pedestrian and bicycle traffic. Items to be considered to provide these improvements include reconfiguring the trail/stairs, modification of existing retaining walls, new barriers/fencing, etc. In addition, coordination between the City and County is known to be necessary for re-design and re-construction of the trail, a map showing the property boundaries is shown below, with a large portion of the plaza within County right-of-way.



Backed by 300+ multi-disciplinary professionals with vast industry experience, ISG proposes to provide the following scope of services to meet project needs.

## SCOPE OF SERVICES

ISG will incorporate site survey data provided by the City along with publicly available data to develop a basemap. ISG will develop up to three (3) concept plans and attend one (1) review meeting with City staff.

Considerations will include:

- MNDOT Trail and National ADA guidelines
- Safety, especially related to circulation, separation of pedestrians from bicycles, expanded sight lines, barrier rail improvements, and separation from the adjacent County road
- Impacts to the existing plaza
- Impacts to the existing infrastructure, including retaining walls, underground utilities, lighting, and pavements
- Any County coordination for plaza modifications, roadway pavement, curb and gutter, barrier rails, and/or lighting impacts
- Pavement types
- Opportunities for expanded use of the plaza and green space, integration of public art, and wayfinding signage

All concept plans will include:

- A detailed grading and alignment plan to ensure the proposed options meet trail and ADA guidelines
- Plan overview/highlights
- Pros/cons
- Opinion of probable cost to construct

## COMPENSATION

ISG proposes to provide the scope of services described within this proposal for compensation of **\$5,700**.

## ADDITIONAL SERVICES

ISG's goal for this proposal, like its services, is to be flexible to accommodate the requirements of this project. Upon request, ISG is able to provide the City with a subsequent proposal to assist with any additional professional design and construction phase services that will be necessary to facilitate construction of this project as it moves forward. In addition, considering the proximity to the Straight River, additional permitting and consideration may be necessary, upon request, ISG is able to provide permitting assistance.

ISG appreciates the opportunity to provide a solution tailored to the needs of the City of Owatonna. Upon acceptance of this proposal, please sign the acknowledgment box below and return a copy to our office. We look forward to providing you with responsive service, a collaborative approach, and timely delivery.



Sincerely,

Amanda Prosser, PLA  
*Vice President*

Becky Guenther, PE  
*Civil Engineer*

[Amanda.Prosser@ISGInc.com](mailto:Amanda.Prosser@ISGInc.com)

[Becky.Guenther@ISGInc.com](mailto:Becky.Guenther@ISGInc.com)

**ACKNOWLEDGMENT OF ACCEPTANCE**

Accepted this \_\_\_\_\_ day of \_\_\_\_\_, 2021.

Name: \_\_\_\_\_

Title: \_\_\_\_\_

Signature: \_\_\_\_\_

This proposal is valid for 30 days.