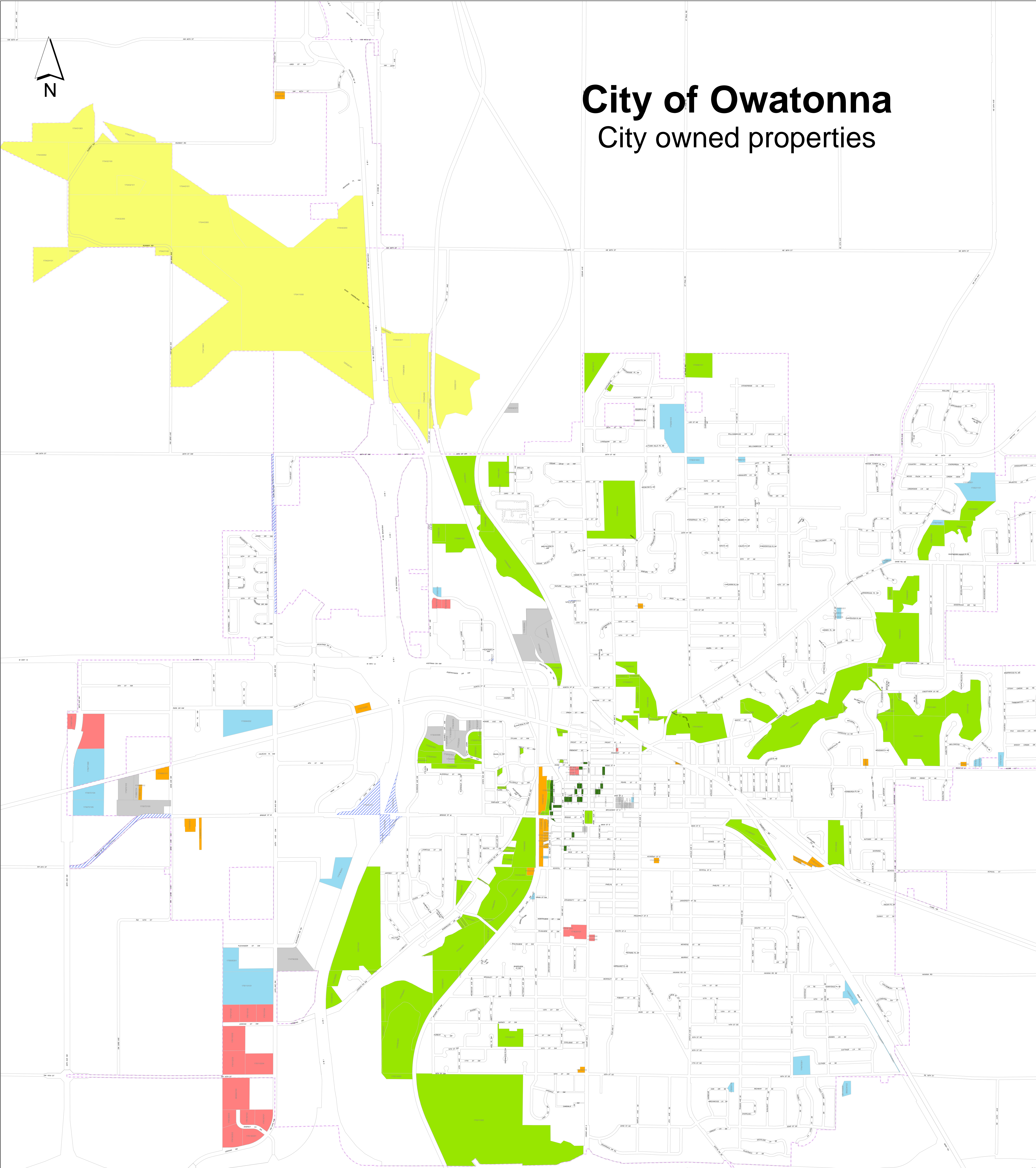
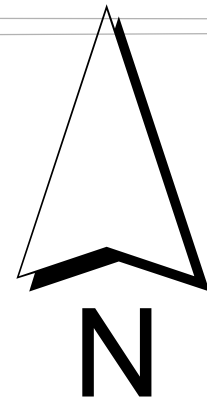


City of Owatonna

City owned properties



Land Use	Count	Ave Parcel		% of Total
		size	Total Acres	
Airport	22	33.64	739.98	39.7%
Gov't Bldgs, Facilities	33	2.32	76.63	4.1%
OPU	30	0.84	25.12	1.3%
Parks, Recreation, Open Space	103	7.38	760.41	40.8%
Property for Sale	26	3.42	96.21	5.2%
Public Parking	25	0.20	5.07	0.3%
Right of Way (owned by City)	12	2.50	29.95	1.6%
Storm Ponds & Retention Areas	32	4.12	131.96	7.1%
Sum ----->	283		1865.33	
Total acres within city boundary ----->			9136	
Percentage of land owned by the city ----->			20.4%	

Legend

City of Owatonna Properties

Land Use

- Airport
- OPU
- Gov't Bldgs, Facilities
- Parks, Recreation, Open Space
- Storm Ponds & Retention Areas
- Public Parking
- Right of Way (owned by City)
- Property for Sale
- Municipal boundary