

West Bridge Street Reconstruction



Owatonna
Minnesota

ISG

TRAFFIC PATTERNS

Traffic patterns for a construction project on West Bridge Street will change starting Monday, May 3, 2021. Weather permitting, both directions of traffic on West Bridge Street between Park Drive and the Southbound I-35 ramps will be closed, and traffic will be routed around the work area via I-35 and Hoffman Road. The Park Drive and I-35 ramp intersections will remain open to traffic at this time.

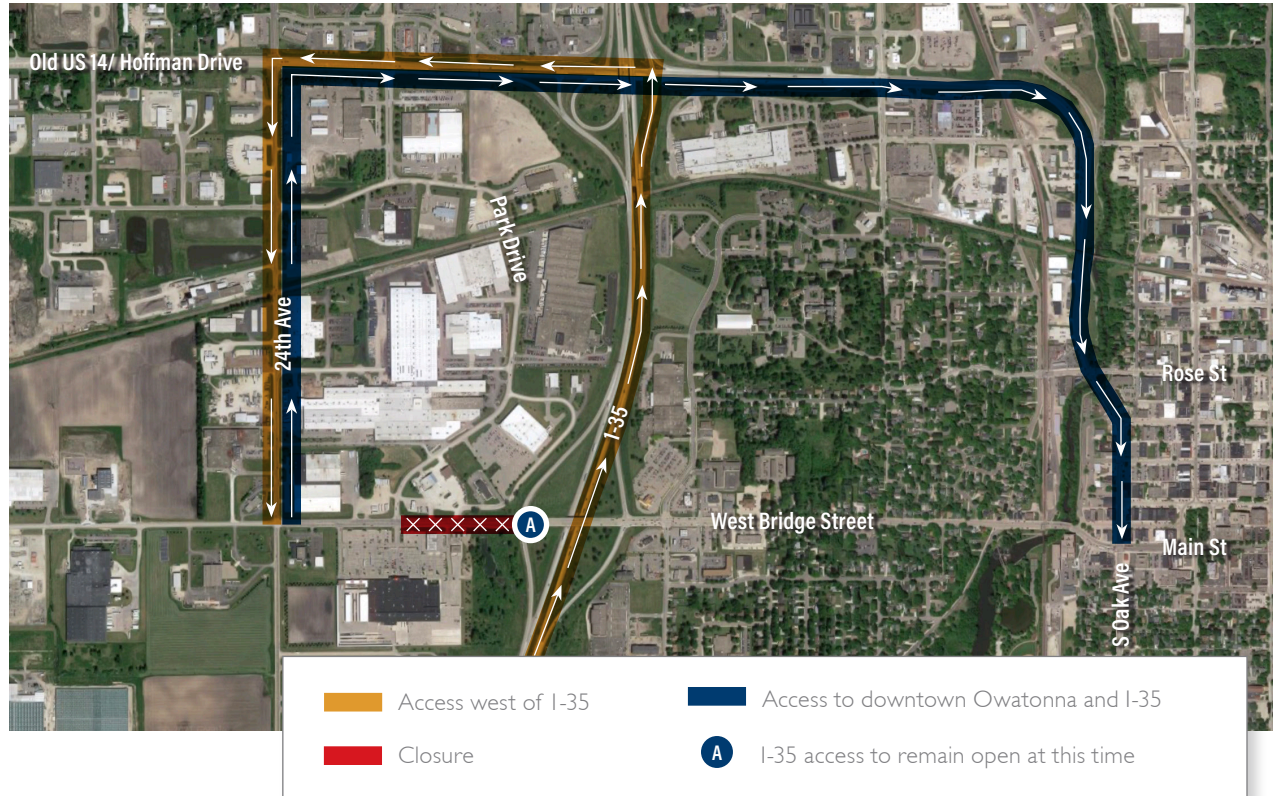
CONSTRUCTION SCHEDULE

Construction on West Bridge Street is anticipated to continue throughout the summer with traffic control changes occurring as work progresses. All work will be substantially complete no later than October 30th, 2021. All dates are subject to change due to weather or other factors. The City of Owatonna advises motorists to drive with caution and slow down through work zones for their safety and for the safety of the construction crews.



For updates on this project, visit:

bit.ly/Owatonna_BridgeStreet



Things to Keep in Mind:

During construction, access may be limited. To help ensure a timely construction process, please follow all construction updates and be sure to:

- Follow detour signage
- Keep out of construction areas
- Drive slowly through work areas and pay attention to traffic control changes throughout the project

QUESTIONS?

If you have any mobility concerns that require special accessibility requirements to driveways or walkways during construction please contact:



Anthony Lance
Construction Administrator
Anthony.Lance@ISGInc.com
651.764.9244



Reese Sudtelgte
Civil Engineer
Reese.Sudtelgte@ISGInc.com
952.426.0699

Available Monday
through Friday.
9:00 a.m. to 5:00 p.m.